



## Your Full-Service Solar Partner Since 2006

When EPC's and Developers need a dependable Solar Carport or Canopy mounting solution, they turn to Sun Action Trackers. As a Single-source provider, Sun Action Trackers is focused on reducing total project costs through complete responsibility for the Design, Engineering, Manufacturing, and installation of efficient PV racking solutions. When you choose Sun Action Trackers for your next solar carport, you're choosing peace of mind that your project is in the hands of the most trusted racking team in the industry. **Since 2006, we have deployed over 1GW of Solar racking spanning over 8000 acres.**

## Scope or Services offered

### Design/Engineering

Sun Action Trackers team of in-house designers can provide complete structural and foundation design specifically designed for your site.

### Manufacturing

Sun Action Trackers utilizes multiple manufacturing facilities worldwide to ensure our quality assurance standards while keeping costs minimized.

### Installation

Sun Action Trackers provides installation and project management services for each carport installation with a focus on delivering on time and on budget

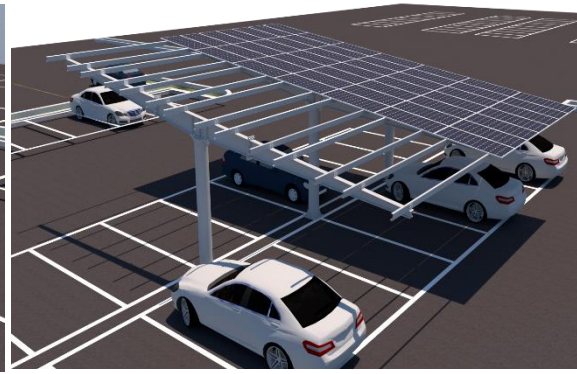
Sun Action Trackers  
15143 Tradesman Dr.  
San Antonio, Texas 78249

[www.sat-energy.com](http://www.sat-energy.com)  
Info@sat-energy.com





Single Row Fixed



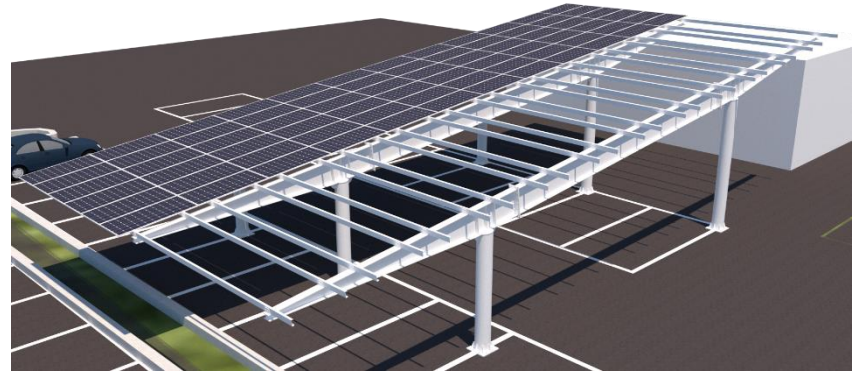
Two Row Fixed



Two Row Inverted



Double Post



Longspan

	Single Row Fixed Carport	Two Row Fixed Carport	Two Row Inverted Carport	Double Post Carport	Long Span Carport
Standard Panel Orientation	3 panels in Portrait	7 panels in Portrait	6 panels in Portrait	8 -11 panels in Portrait	Greater than 12 panels in Portrait
Custom Panel Configuration and Orientation	4 panels in Portrait 6 - 8 panels in Landscape	6 panels in Portrait 12 - 14 panels in Landscape	12 panels in Landscape	16 - 22 panels in Landscape	Greater than 24 in Landscape
Number of North South Foundations	1	1	1	2	2 or more
Tilt Angle	Standard is 7 degrees. Greater than 7 degrees is custom design				2 degrees. Greater than 2 degree is custom design
Minimum Ground Clearance	10ft from bottom of solar panel to ground, other clearances are available				
Column Spacing	18ft, 27ft East West, other distance are available			North South is custom design	
Carport Connections	Bolted connections, No field welding required				
Foundations	Sono-Tube / Spread Footing / Helical Pile				Sono-Tube / Spread Footing
Finish Color options	Galvanization, White (optional), Brown (optional), Black (optional)				
Water management	Water Gutter & Snow guard (optional), Sealing gasket between panels (optional)				



## Dual Axis Tracker Carports

Maximize production in your carport project by installing a Dual Axis Solar Tracking Carport. By using of our Dual Axis Solar Carports, you **can Increase your production by up to 50%** with the use of Bi-facial solar panels.

There have been over **50,000 Dual Axis Trackers installed worldwide** proving that Sun Action Trackers' offering is established and continues to prove that we are Eying the Sun.